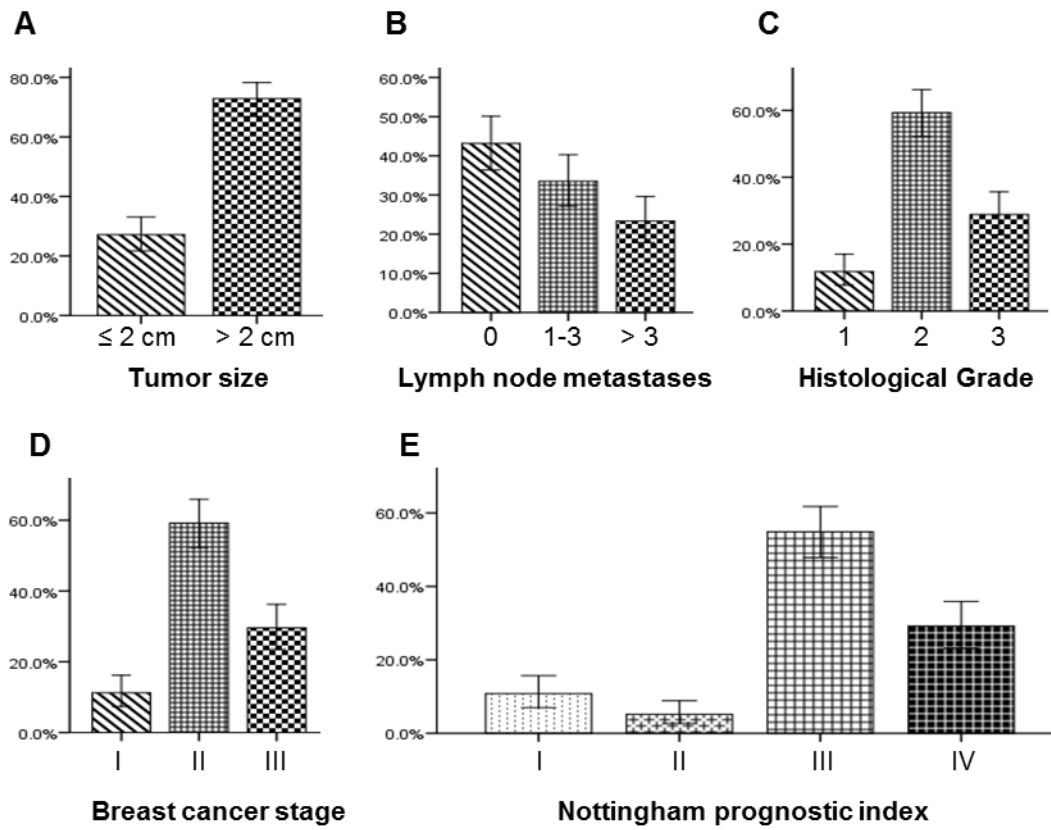
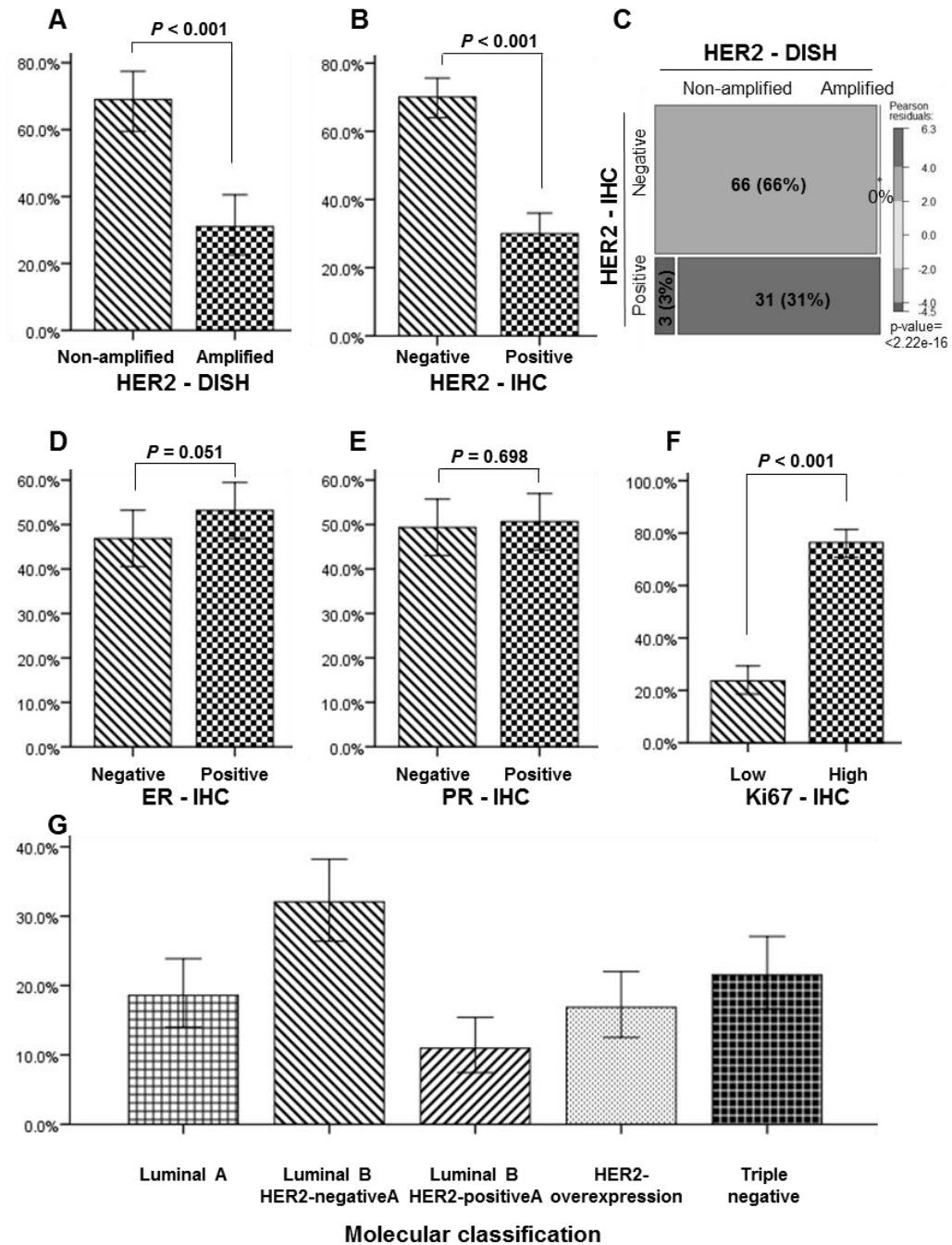


SUPPLEMENTARY FIGURE



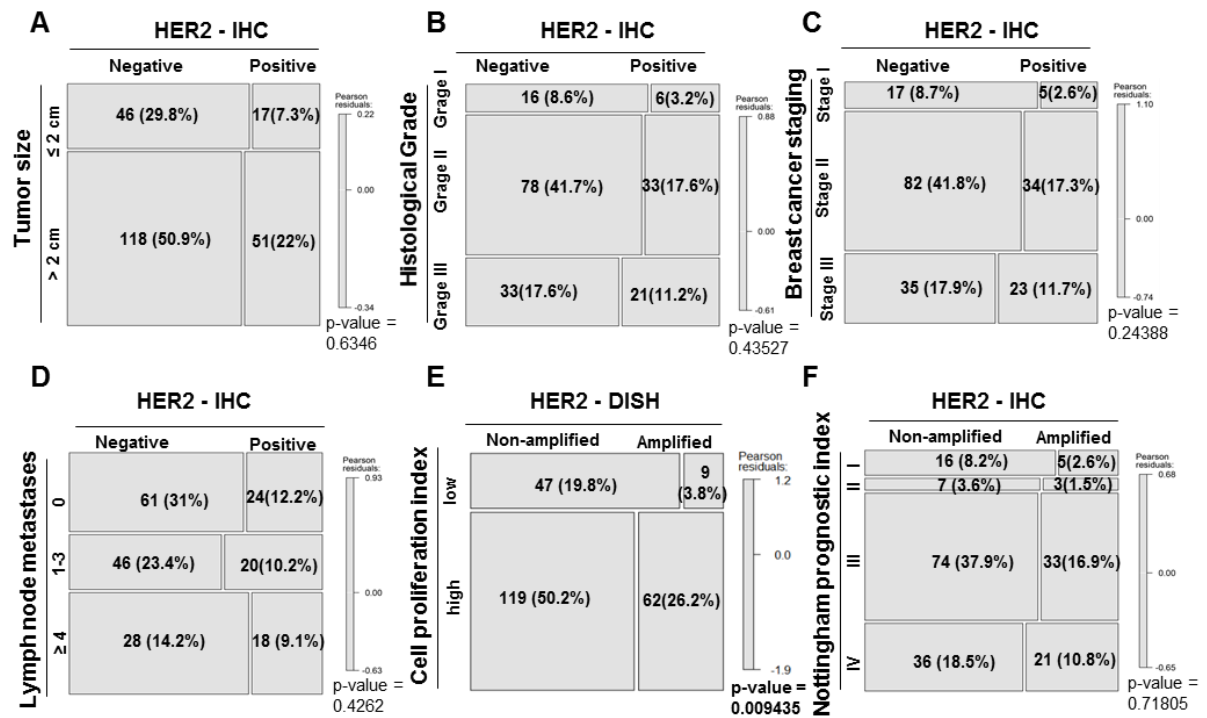
Supplementary Figure 1. Patient and tumour characteristics of patients with breast cancer

A. Tumor size; **B.** Lymph node metastases; **C.** Histological grade; **D.** Breast cancer stage; **E.** Nottingham prognostic index



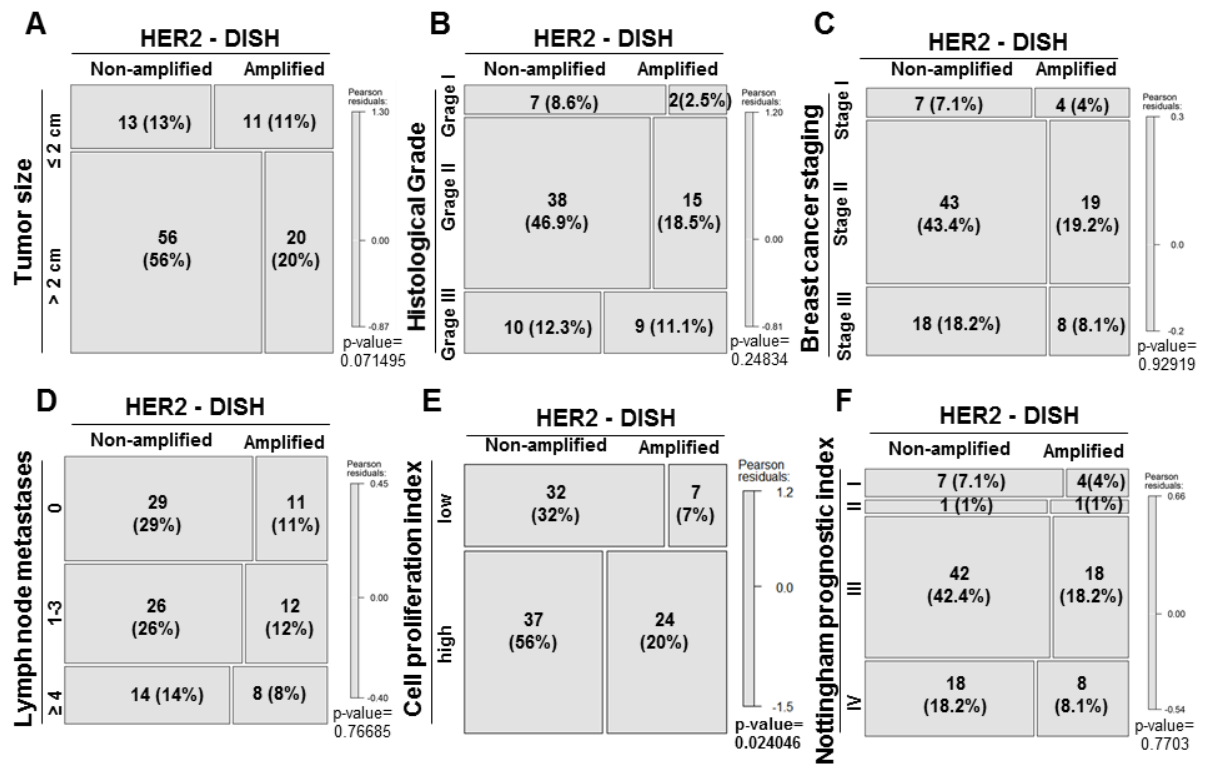
Supplementary Figure 2. Molecular feature of patients with breast cancer

A. Dual color in situ hybridization (DISH) analysis of human epidermal growth factor receptor 2 (HER2) ; **B.** Immunohistochemical (IHC) analysis of HER2; **C.** Correlation between HER2 DISH and IHC; **D.** IHC analysis of ER; **E.** IHC analysis of PR; **F.** IHC analysis of Ki67; **G.** Molecular classification of breast cancer



Supplementary Figure 3. Correlation of HER2 protein overexpression and clinicopathological characteristics in breast cancer patients.

Correlation between HER2 protein expression by IHC and tumor size (A), histological grade (B), breast cancer staging (C), lymph node metastases (D), cell proliferation index (E), and Nottingham prognostic index (F) in breast cancer patients.



Supplementary Figure 4. Correlation of HER2 gene amplification and clinicopathological characteristics in breast cancer patients

Correlation between HER2 gene amplification by DISH and tumor size (A), histological grade (B), breast cancer staging (C), lymph node metastases (D), cell proliferation index (E), and Nottingham prognostic index (F) in breast cancer patients.