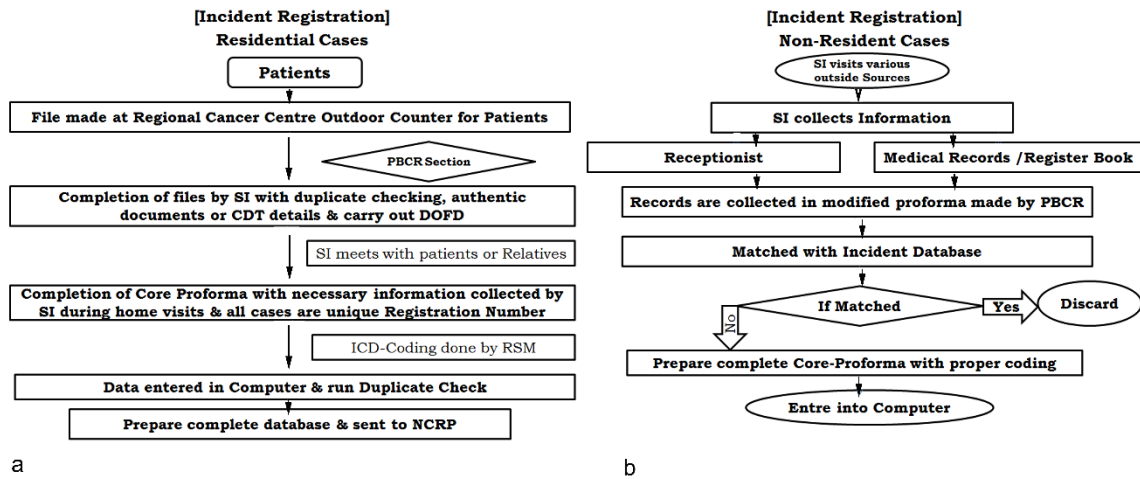


Supplementary Table 1: Methods of diagnosis of cancer. DCO: Death certificate only

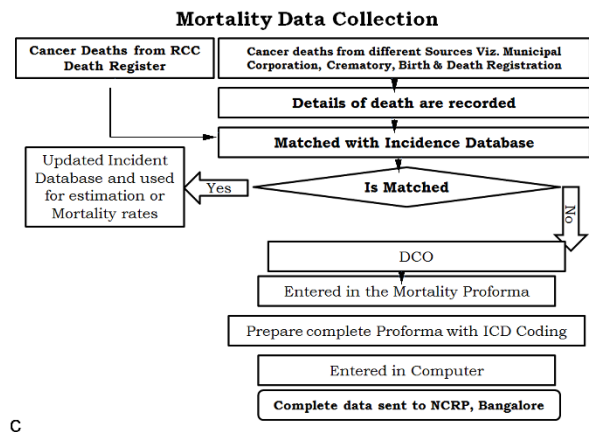
METHOD OF DIAGNOSIS	PERCENTAGE				
	2010	2011	2012	2013	2014
Clinical Only	0.5	0.1	1.2	0	0.2
Microscopic	97	94.8	95.9	95.5	93.1
X-Ray/ Imaging Techniques	1.3	2.8	2.5	3.6	5.7
DCO	0.6	0.6	0	0.2	0.1
Others	0.6	1.7	0.4	0.7	0.9

Supplementary Figure 1: Flow chart of incident registration and mortality data collection



a

b



c