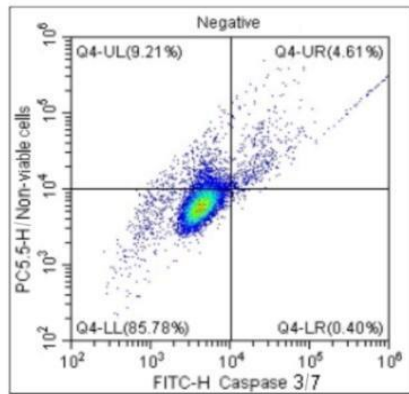
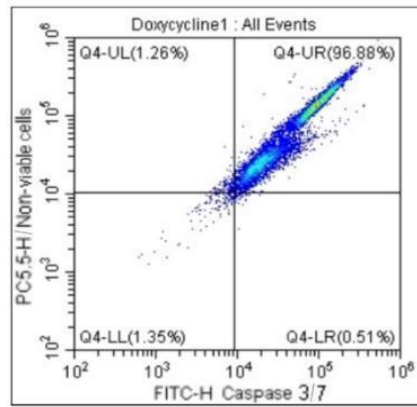
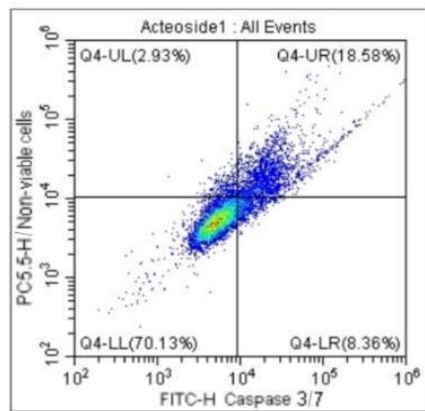
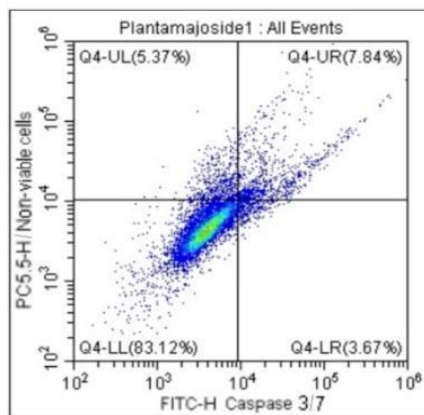
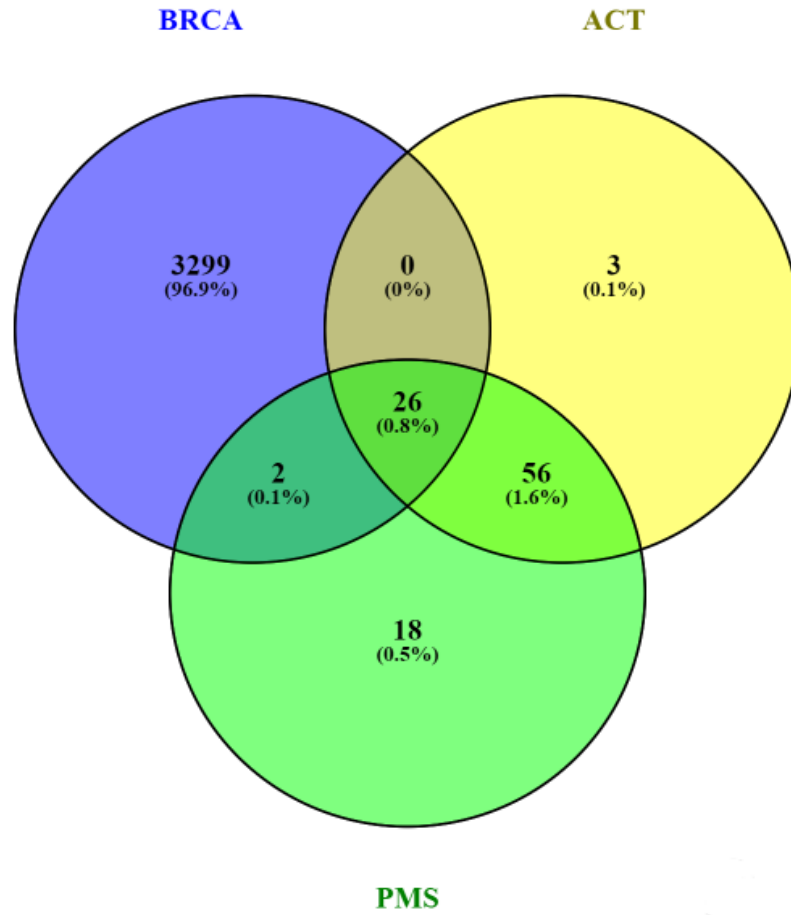


Supplementary Figure 1. Percentage of Migration Area in MCF-7 Cells Treated with IC₅₀ of DOX, ACT, and PMS: Time-course Analysis at 0, 24, and 48 Hours. Results are expressed as mean ± SEM (bars).

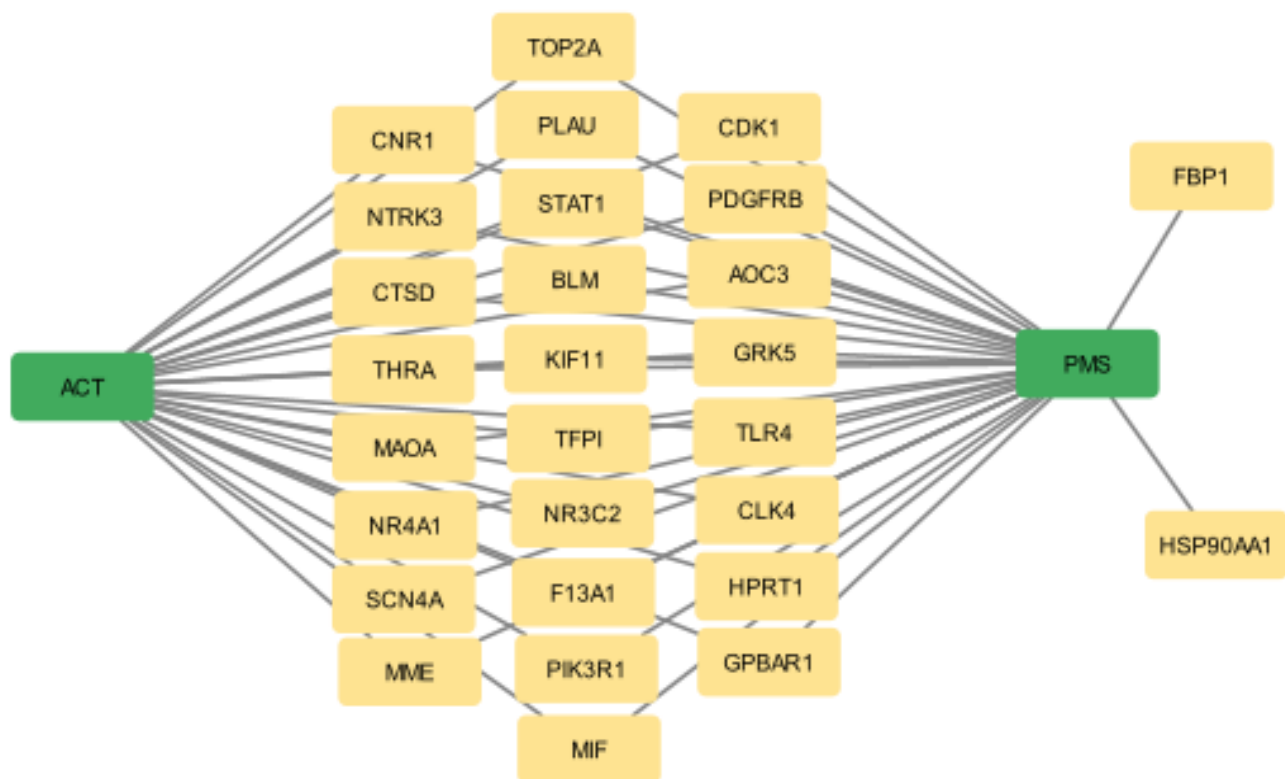
NEGATIVE CONTROL**DOX**

ACT**PMS**

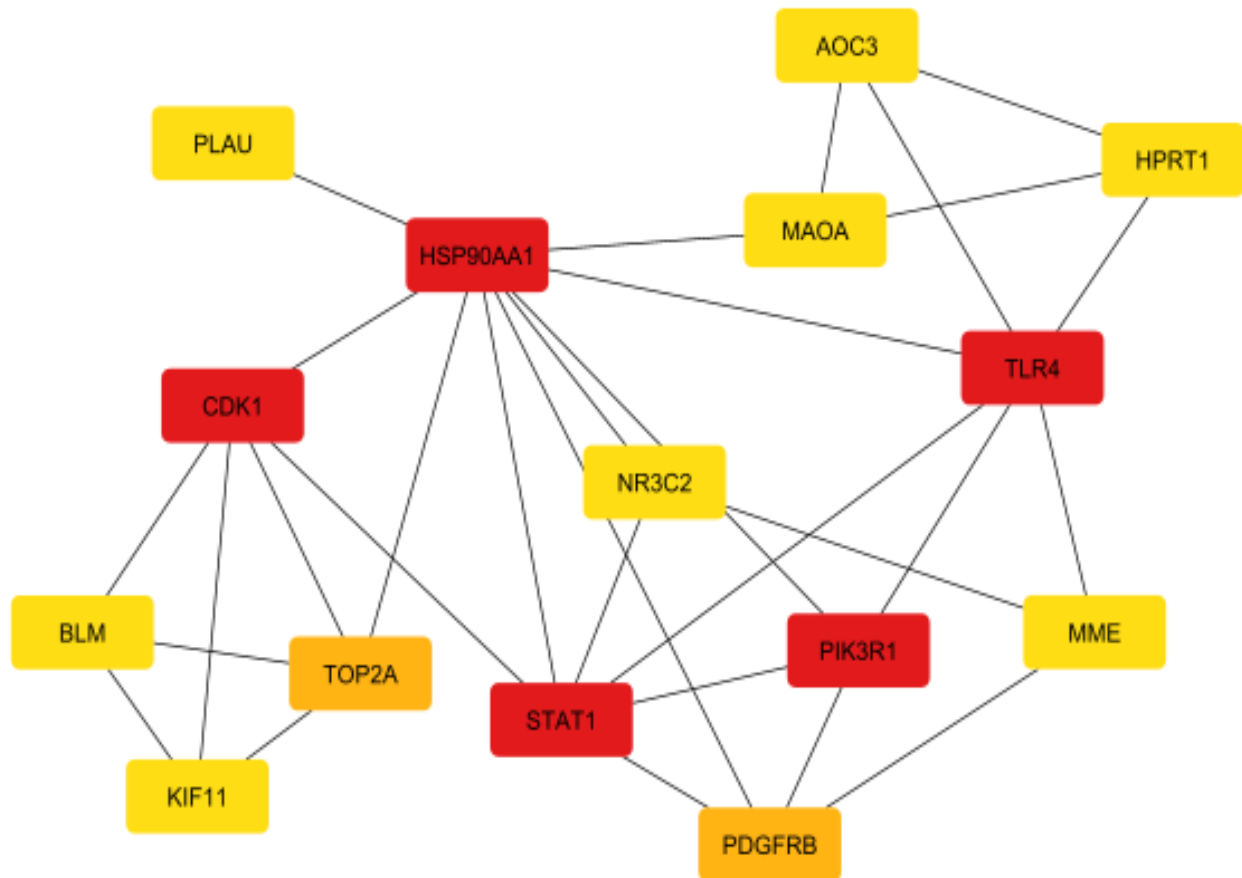
Supplementary Figure 2. Flow Cytometric Analysis of Caspase 3/7 Assay in MCF-7 Cells Treated with IC₅₀ of DOX, ACT, and PMS.



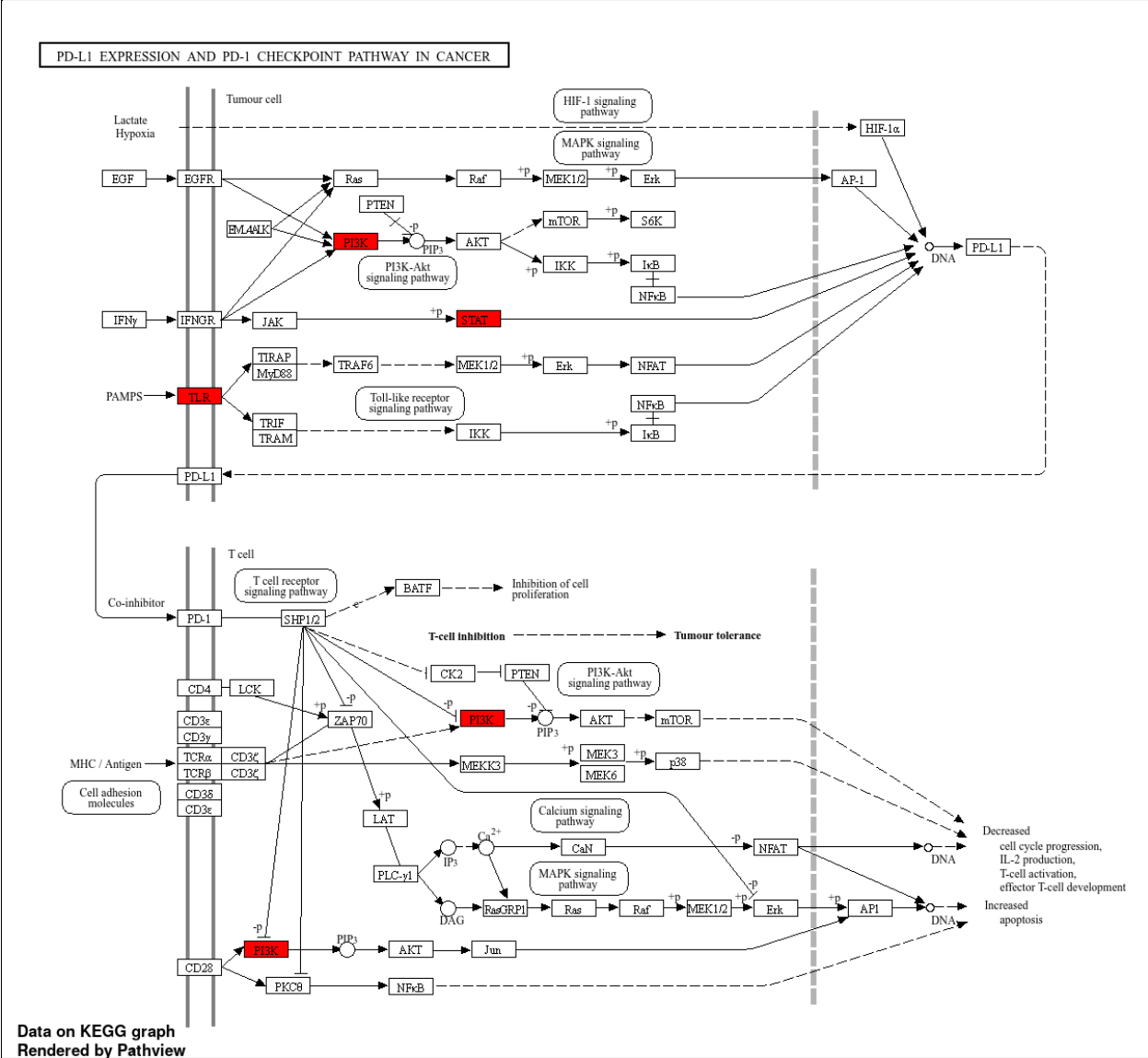
Supplementary Figure 3. Gene set relationship between BRCA and the compounds ACT and PMS



Supplementary Figure 4. Compound-target network of ACT and PMS



Supplementary Figure 5. Protein-protein interaction network (PIN) of identified proteins targets of ACT and PMS. Red labelled proteins are top-ranking in interactivity.



Supplementary Figure 6. Cancer Pathway Involvement of ACT and PMS Targets Illustrated by KEGG