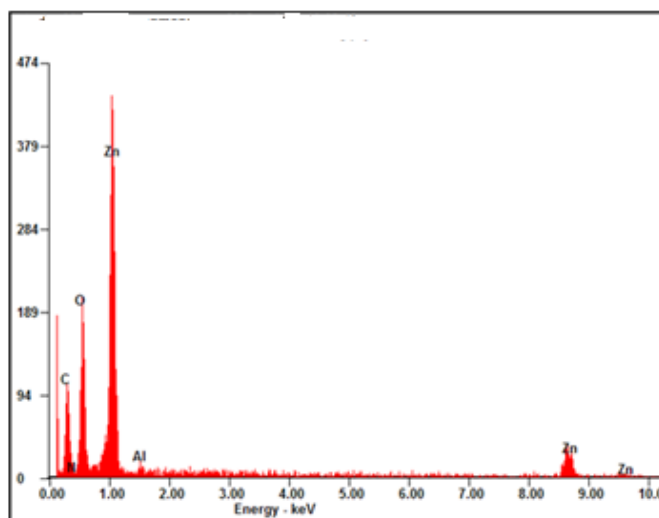
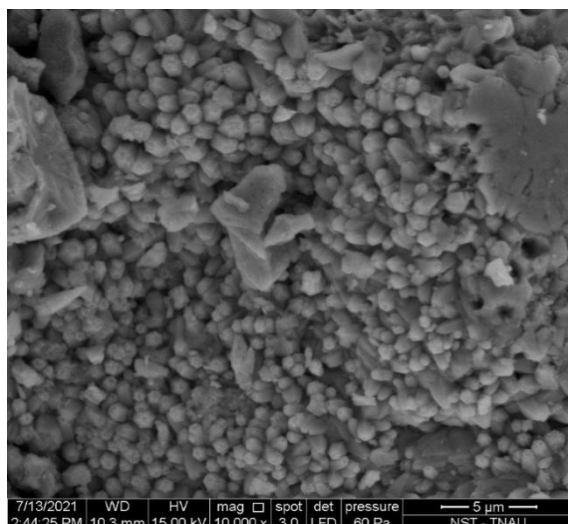


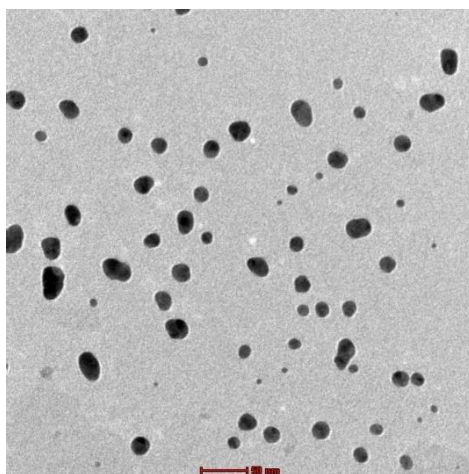
Supplementary Figure 1: Zeta potential of SS-ZnO NPs from aqueous root extract of *S. schimperiana* measurement at 25°C using electrophoretic light scattering



Supplementary Figure 2: EDAX spectrums and elemental composition of SS-ZnO NPs

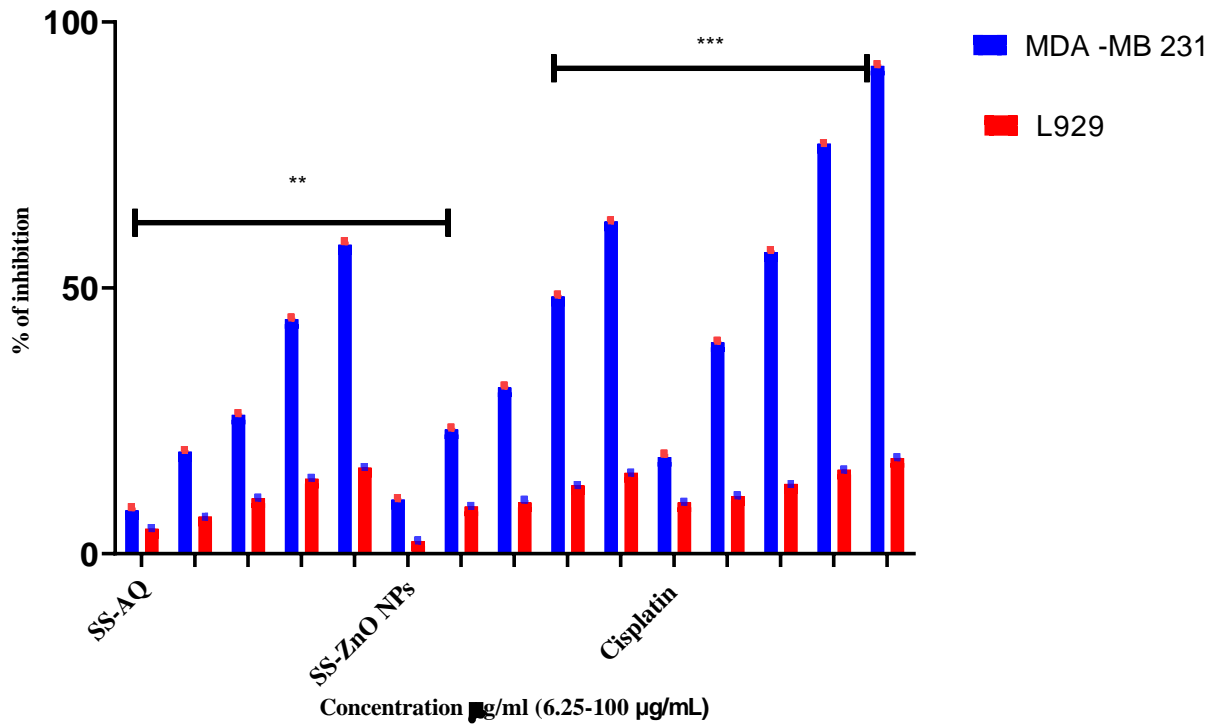


Supplementary Figure 3: SEM images of SS-ZnO NPs from root extract of *S. schimperiana*

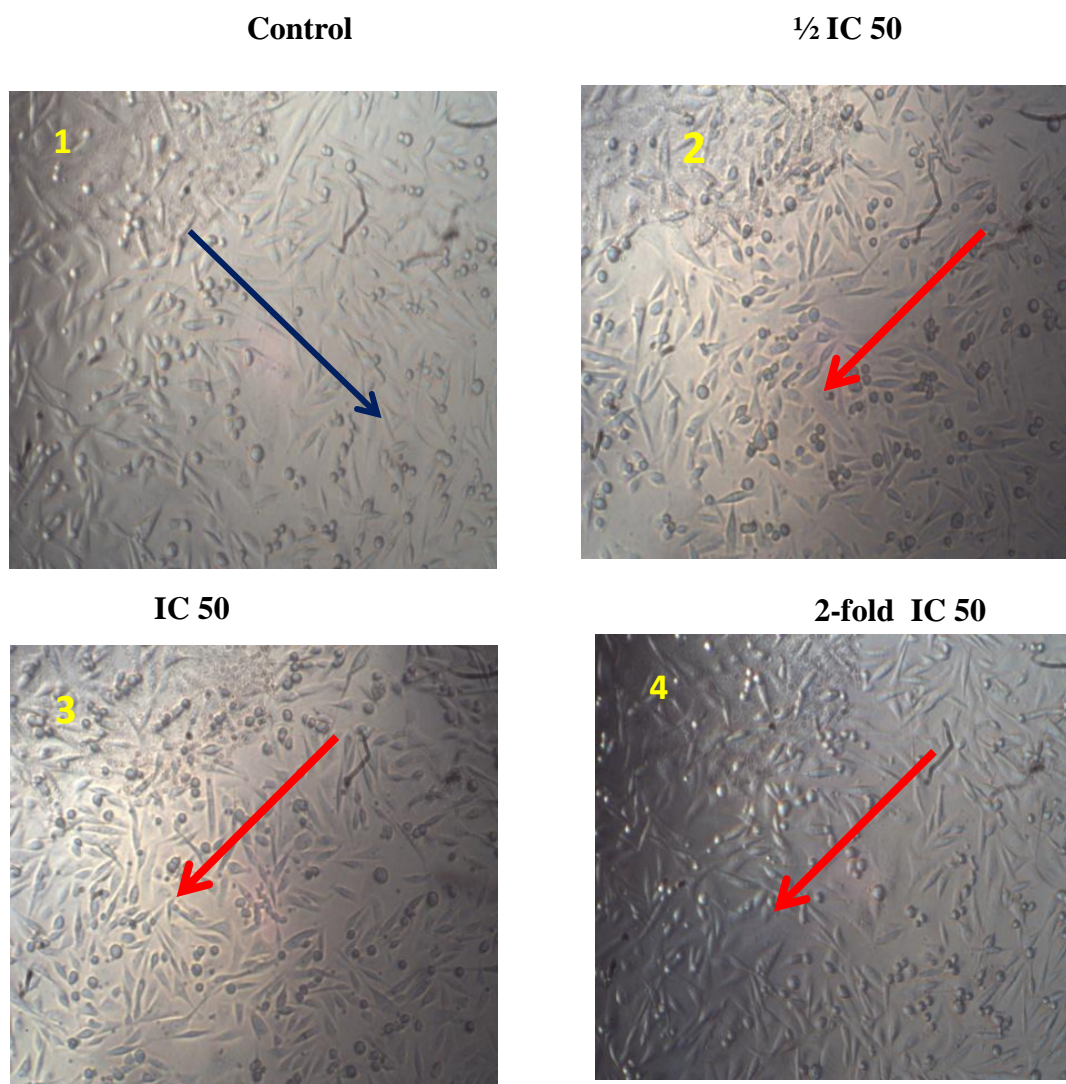


Supplementary Figure 4: TEM images of SS-ZnO NPs root extract of *S. schimperiana*

Selective cytotoxicity of SS-ZnO NPs



Supplementary Figure 5: Comparative Selective cytotoxic effect of SS-AQ, SS-Au NPs and SS-ZnO NPs on MDA-MB-231 cell lines with statistical significance difference at * $p < 0.05$, ** $p < 0.01$, and *** $p < 0.001$ versus control.



Supplementary Figure 6: Morphological changes of MDA-MB-231 cell lines observed under phase contrast microscope (1000X) (1 (Control), 2, 3 and 4) MDA-MB-231 cells lines treated with SS-ZnONPs at $\frac{1}{2}$ IC₅₀ (20 μ g/mL), IC₅₀ (40 μ g/mL), and $2\times$ IC₅₀ (120 μ g/mL) respectively. Morphological changes were indicated in red arrows.